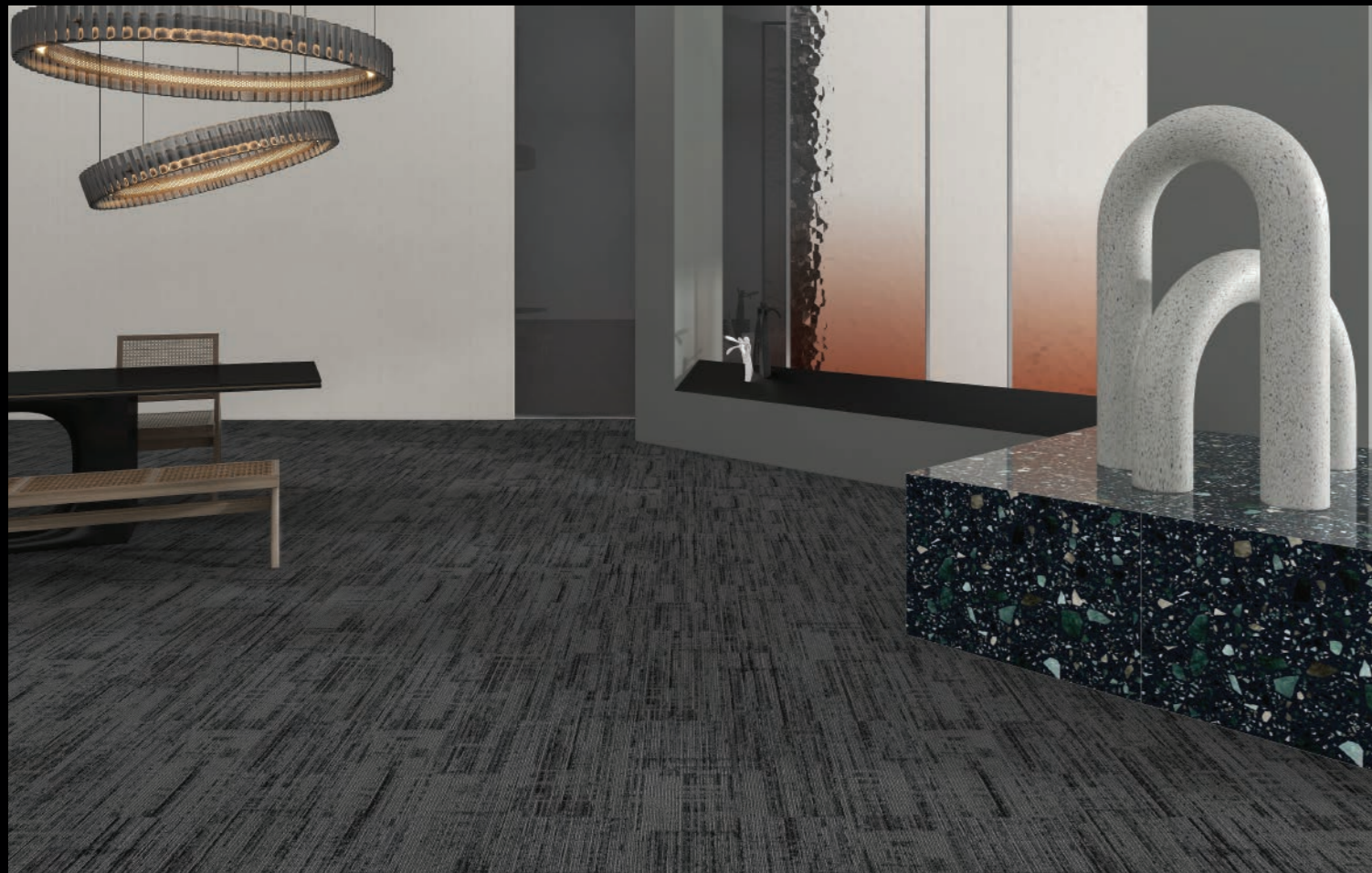




Nobel 04



Nobel 03

## TECHNICAL SPECIFICATIONS

NORM	TEST	VALUE
Construction		Tufted 1/12" Multi Level Loop
Pile Material		100% Solution Dyed PP
Backing		E+Bac Bithumen
Size		25x100
Packaging		5 m2 per box
Pile Weight		650 g/m <sup>2</sup>
Total Weight		3400 g/m <sup>2</sup>
Pile Height		4.00 mm
Total Height		6,5 mm
Tuft Density		186.000/m <sup>2</sup>
Flammability	ASTM E645	≥0.22watts/cm <sup>2</sup> Class II
Color Fastness to Light	AATCC Test Method 16E	≥ 4-5
Color Fastness to Water Rubbing	AATCC Test Method 107	≥ 4-5
Static Propensity	AATCC Test Method 134	≤ 3.5 kV
Smoke Density	ASTM E662	≤ 450 DMC
Delamination	ASTM D3636	≥ 3.0 lbc/in
Tuft Bind	ASTM D1335	≥ 8.0 lbs



Nobel 13

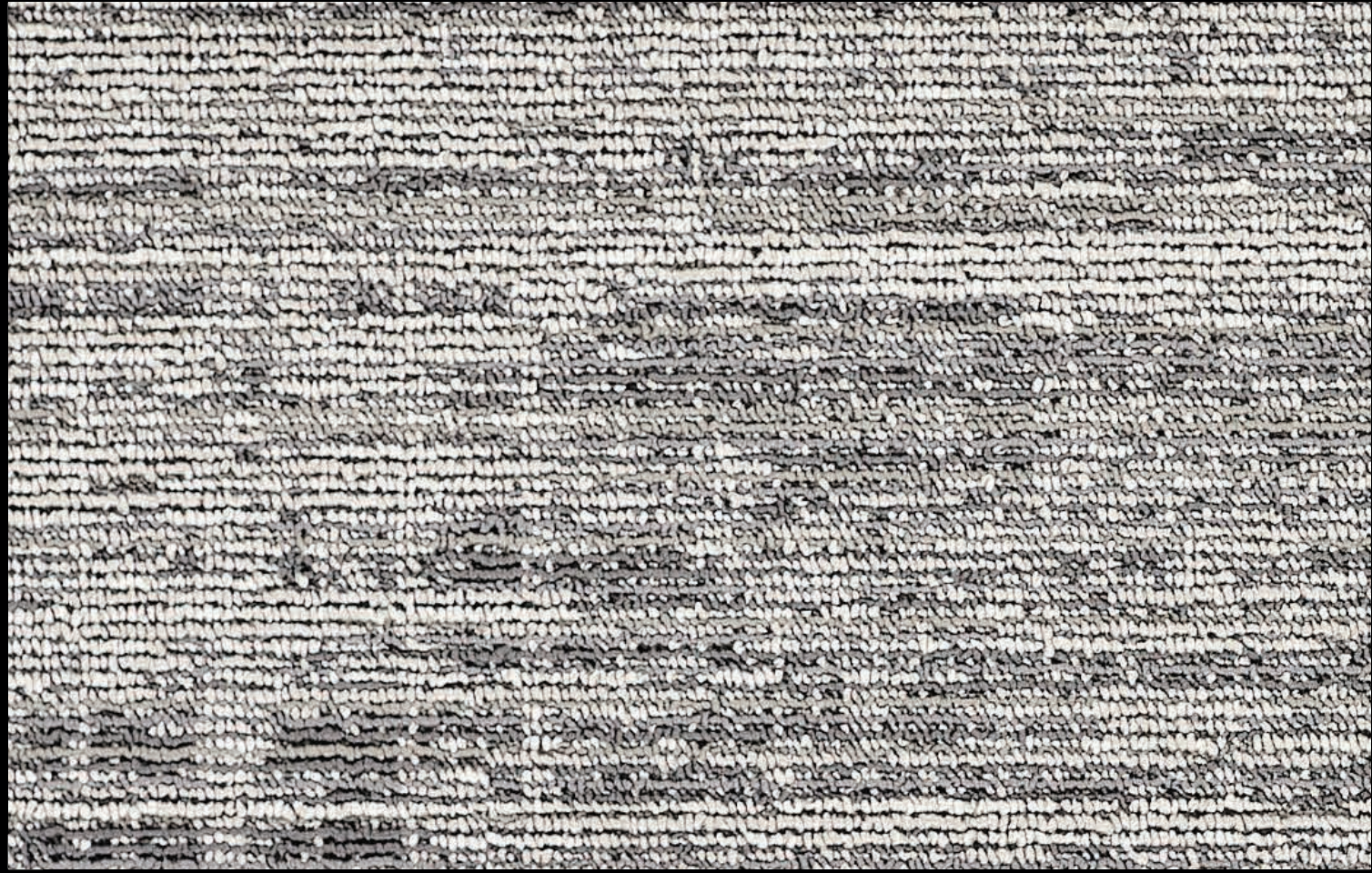
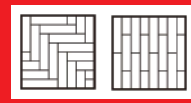


# 19. NOBEL Collection

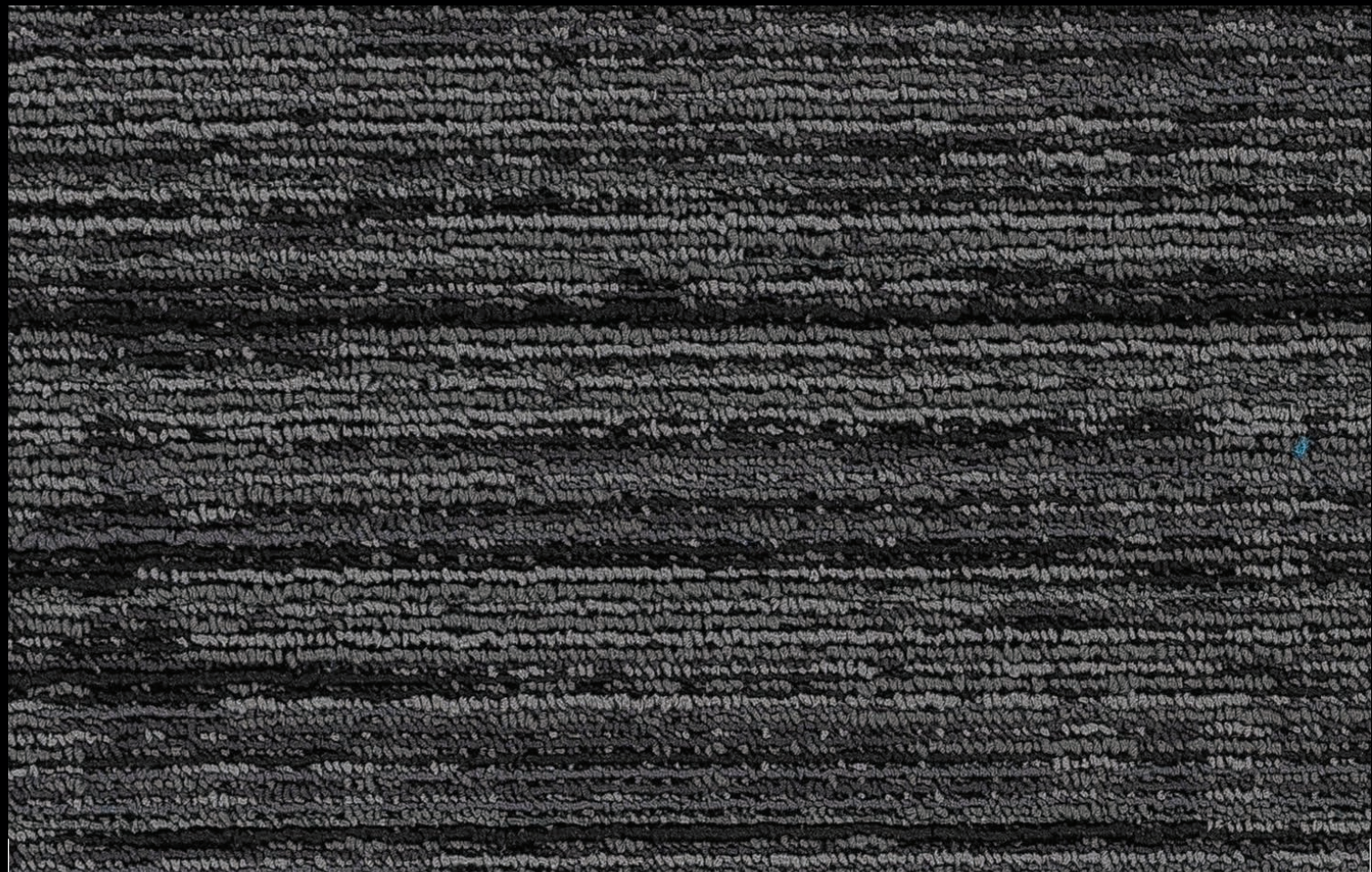


NOBEL

CARPET TILE 25 x 100 cm



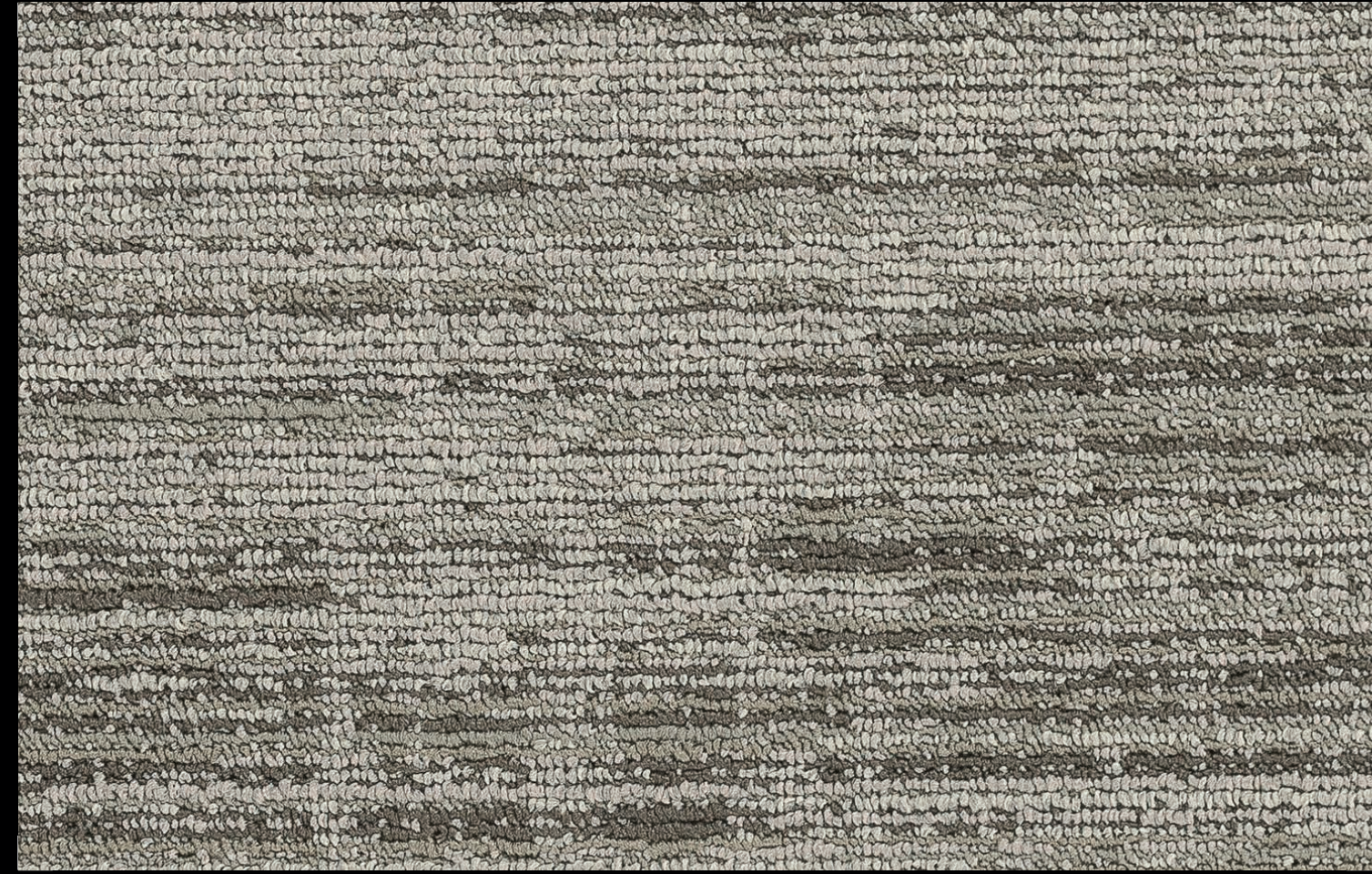
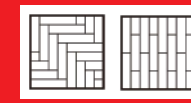
Nobel 04



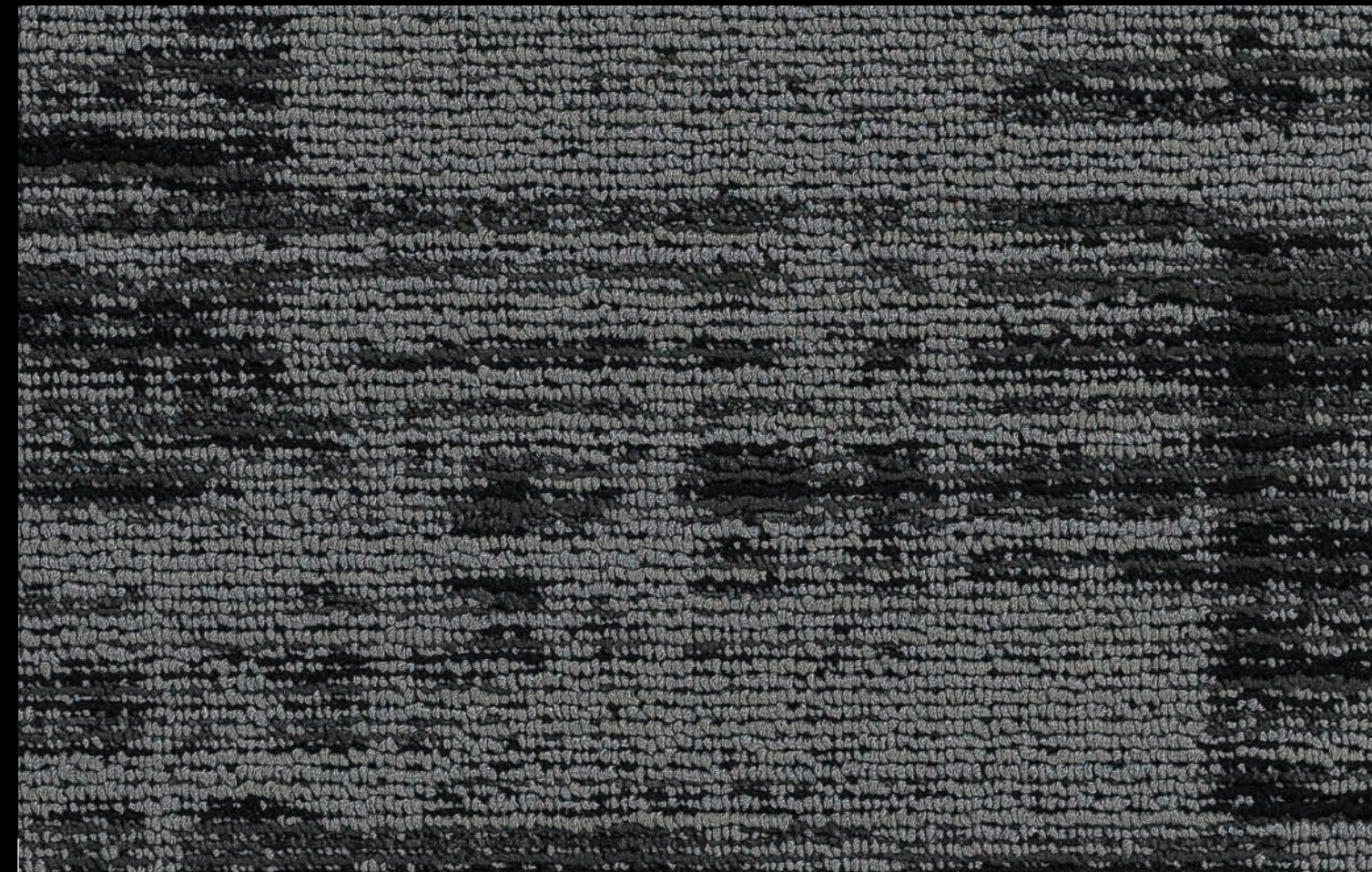
Nobel 03

NOBEL

CARPET TILE 25 x 100 cm



Nobel 13



Nobel 09

NOBEL

CARPET TILE 25 x 100 cm



Nobel 13



Nobel 09